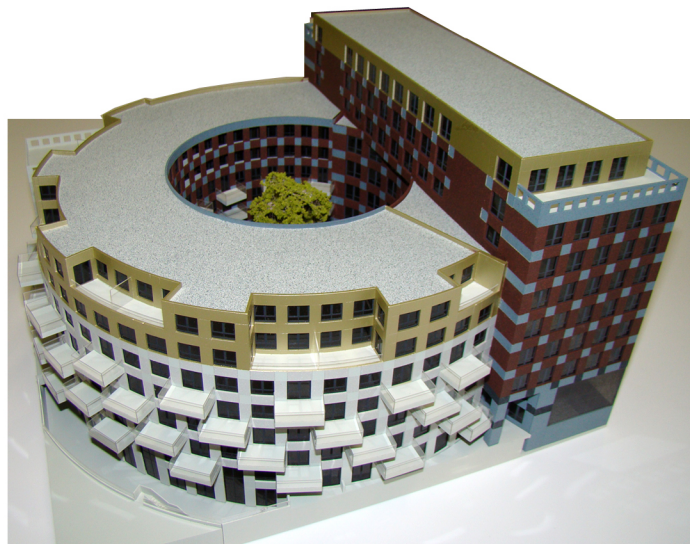


Paleiskwartier/'s Hertogenbosch(Olanda)
2002 -

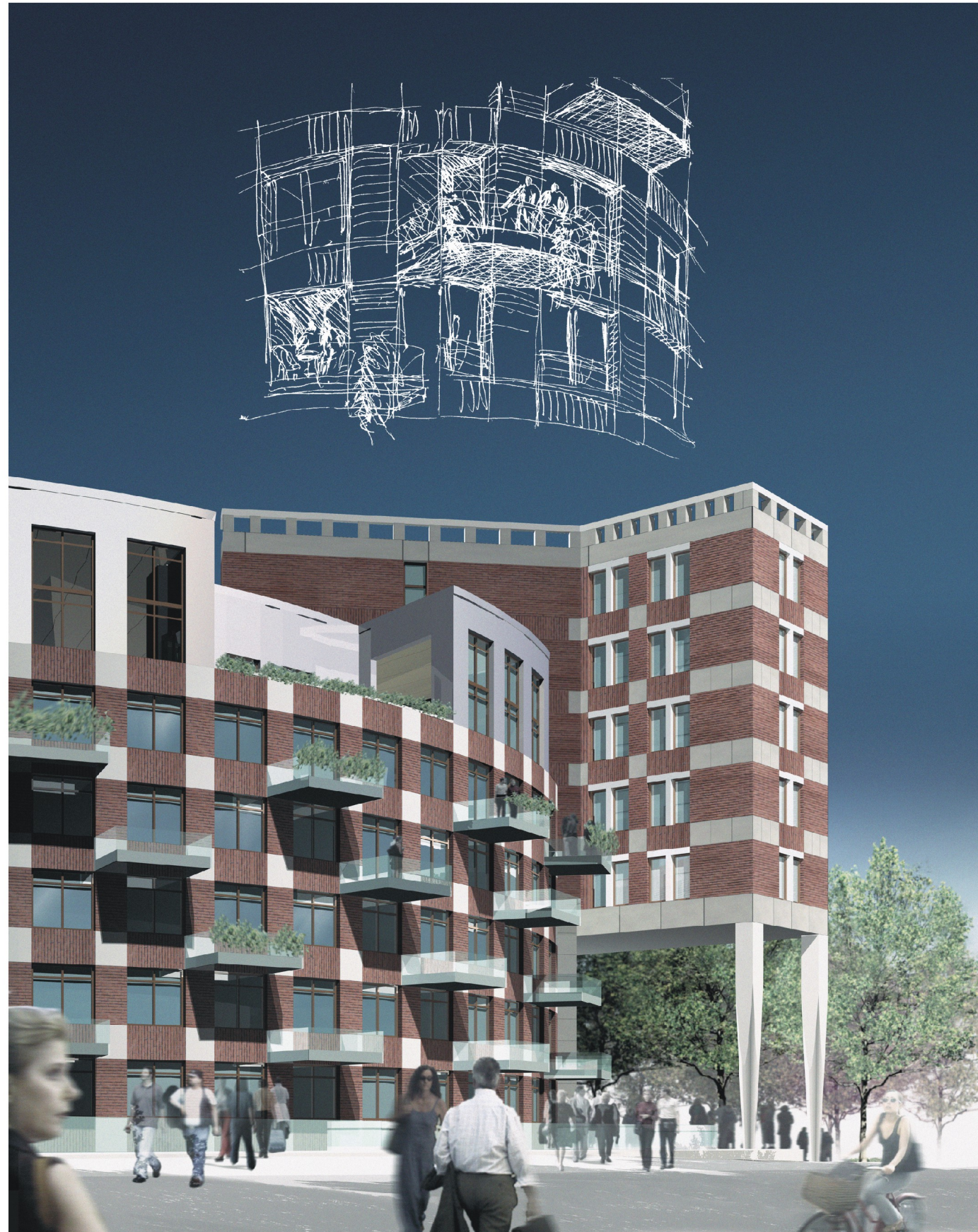
Natalini Architetti, Firenze
Con Abken Schrauwen Architecten, Ijsselstein
Cl: B.V.Ontwikkelingmaatschappij Paleiskwartier

Edificio per uffici ed appartamenti
uffici 8952 mq
appartamenti 9480 mq
S.U.L. totale 18432 mq



Paleiskwartier/'s Hertogenbosch(Olanda)
2002

Con Architectenburo C.Schrauwen, Amsterdam



0201_S301_T01_V00-V01

V00



V01